

TOYO-G

A U T O - T E C H

S O L U T I O N

HEAVY
INDUSTRIAL

Engineering
use

TECHNOLOGY
AUTOMOTIVE

Mechanic
use only

extra +
ADDITIONAL

EXTENDED PERFORMANCE

FUEL
SYSTEM



"Our Auto-tec series is designed to cater to the needs of car enthusiasts, hobbyists, and professionals alike .

FUEL SYSTEM CLEANER

DIESEL FUEL TREATMENT

Maintenance



We know how important it is to keep your beloved vehicles in top condition .

ENGINE FLUSH

ASSEMBLY LUBE



| The Grease & Lubricant Manufacturer
A Member Of NLGI, USA | National Lubricating Grease Institute

EXTENDED PERFORMANCE

FUEL SYSTEM CLEANER

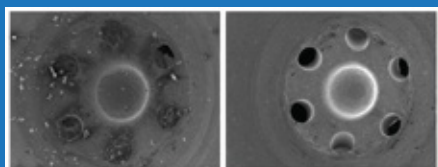
0.3 : 50

Suitable for all

gasoline engines

Pour entire contents into fuel tank before or after fueling. 300ml sufficient for up to 50 Litres of fuel.

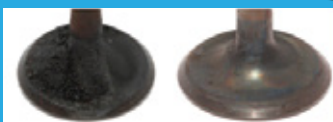
TOYO-G™ Restore power and fuel system efficiency. Protects against carbon build-up and engine knock. Clean deposits from fuel injectors, carburetors, intake valves, and combustion chambers.



Base Fuel

TOYO-G™ FSC

Clean Injectors = Better Engine Performance

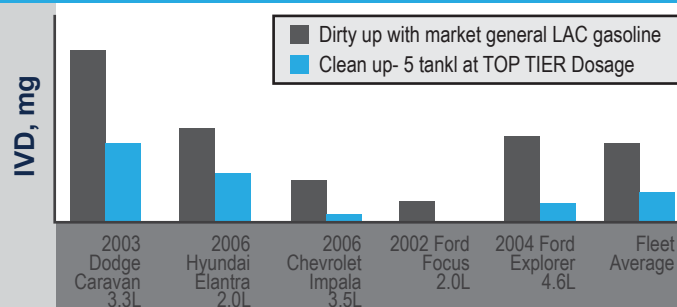


Base Fuel

TOYO-G™ FSC

Restore **Power** & Fuel system efficiency

Real World Intake Valve Deposit Clean-up Evaluation



Excellent performance in PFI engines as shown by the 69% fleet average clean-up of intake valve deposits

PHYSICAL & CHEMICAL PROPERTIES

| | |
|------------------------|----------------------------|
| Appearance | Liquid at room temperature |
| Colour | Yellowish |
| Odor | Petroleum odor |
| Pour point | -37°C / -34.6°F |
| Flash Point | >63°C / 145.4°F |
| Boiling/ Melting point | Not determined |
| Solubility in water | Insoluble |

Application:

Suitable for all gasoline engines

Direction for use :

Pour entire contents into gas tank before or after fueling. 300 ml sufficient for up to 50 Litres of fuel.



Part No: 8696L-1428

NET Volume: 300ML

10PCS / BOX

HEAVY INDUSTRIAL

Engineering use

TECHNOLOGY AUTOMOTIVE

Mechanic use only

extra + ADDITIVE

EXTENDED PERFORMANCE

DIESEL FUEL TREATMENT

0.3 : 70

Pour entire contents into fuel tank before or after fueling. 300ml sufficient for up to 70 Litres of fuel.

INCREASE CETANE NUMBER UP TO

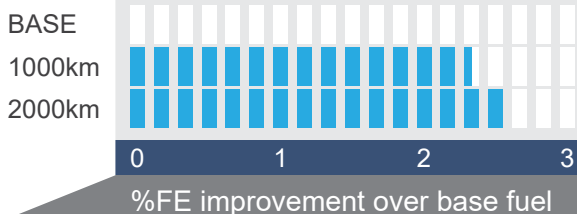
4to6

TOYO-G™ Restore power and diesel injection system efficiency. Clean engines use less fuel and reduce the pollutant emissions. Increase 4 to 6 cetane number Improves the ignition performance of the diesel fuel and ensures smooth engine running .

Enhanced cleaning
POWER keeps injectors
like new

- Fuel Economy
- Power & acceleration
- Emission Reduction
- Enhanced engine life

Fuel economy attainable from the 1st tank at supreme "clean-up" treat-rate



PHYSICAL & CHEMICAL PROPERTIES

| | |
|------------------------|----------------------------|
| Appearance | Liquid at room temperature |
| Colour | Brown |
| Odor | Petroleum odor |
| Pour point | -36°C / -32.8°F |
| Flash Point | >68°C / 154.4°F |
| Boiling/ Melting point | Not determined |
| Solubility in water | Insoluble |

Application :

Suitable for all diesel engines with and without a diesel particulate filter

Direction for use :

Pour entire contents into fuel tank before or after fueling. 300 ml sufficient for up to 70 Litres of fuel.



Part No: 8696L-1427

NET Volume: 300ML

10PCS / BOX

HEAVY INDUSTRIAL

Engineering use

TECHNOLOGY AUTOMOTIVE

Mechanic use only

extra + ADDITIVE

EXTENDED PERFORMANCE

ENGINE FLUSH

0.3 : 6

USE WITH EVERY OIL CHANGE

300ml is sufficient for engines with up to 6 liters oil volume.



REMOVES HARMFUL SLUDGE AND DEPOSITS

FEATURES AND BENEFITS

- Engine interior cleaning.
- Frees harmful deposits and residues from the engine.
- Help maintain power and engine efficiency.

- ✓ Clean Engine Parts
- ✓ Clean Up What the Filter Misses
- ✓ Keep New Oil Clean
- ✓ Give Your Car a Clean Slate
- ✓ Remove Deposit Build-UP



PHYSICAL & CHEMICAL PROPERTIES

| | |
|------------------------|----------------------------|
| Appearance | Liquid at room temperature |
| Colour | Brown |
| Odor | Petroleum odor |
| Pour point | -38°C / -36.4°F |
| Flash Point | 62°C / 143.6°F |
| Boiling/ Melting point | Not determined |
| Solubility in water | Insoluble |

Attention:

Not suitable for use on motorbikes with wet clutches!

DIRECTION FOR USE

Add to the engine before changing engine oil. Allow to idle for 10 minutes. Then switch off the engine, and drain the used engine oil. Replace with new engine oil and oil filter. 300ml is sufficient for engines with up to 6 liters oil volume.

Part No: 8696L-1426

NET Volume: 300ML

10PCS / BOX

HEAVY INDUSTRIAL

Engineering use

TECHNOLOGY AUTOMOTIVE

Mechanic use only

extra + ADDITIVE

PROFESSIONAL MAINTENANCE KIT

ASSEMBLY LUBE

EXTREME PRESSURE

TOYO-G™ Assembly lube provide excellent lubrication properties to protect engine components during the critical initial startup period. This product provide a strong film strength to prevent metal-to-metal contact, reduce friction and wear.

- ✔ Use to pre lube bearings, cams, lifters, valve train
- ✔ Perfect for engine building
- ✔ Prevents breakdown during long term storage
- ✔ Eliminates dry starts
- ✔ Prevents seizing, galling and scuffing
- ✔ Compatible with all oils
- ✔ Super slick and tacky
- ✔ Easy to apply



PHYSICAL & CHEMICAL PROPERTIES

| | |
|--|--------------------------------|
| Appearance | Thick lube at room temperature |
| Colour | Blue |
| Texture | Smooth |
| Penetration Worked 60 Strokes | 355 to 430 |
| Copper strip corrosion for grease (ASTM D4048) | 1b |
| Timken OK load, lb (ASTM D2509) | 60 |

PRODUCT APPLICATION

Clean and dry the area to be treated, apply evenly to surface. Remove excess, re-apply as necessary.

Part No: 8696L-0245

NET Volume: 100ML

40PCS / BOX

HEAVY
INDUSTRIAL

Engineering
use

TECHNOLOGY
AUTOMOTIVE

Mechanic
use only

extra +
ADDITIONAL



ONE STOP LUBRICANTS SOLUTION PROVIDER

Scan QR code
to read more **TOYO-G**
Product info.

linktr.ee/toyog

